



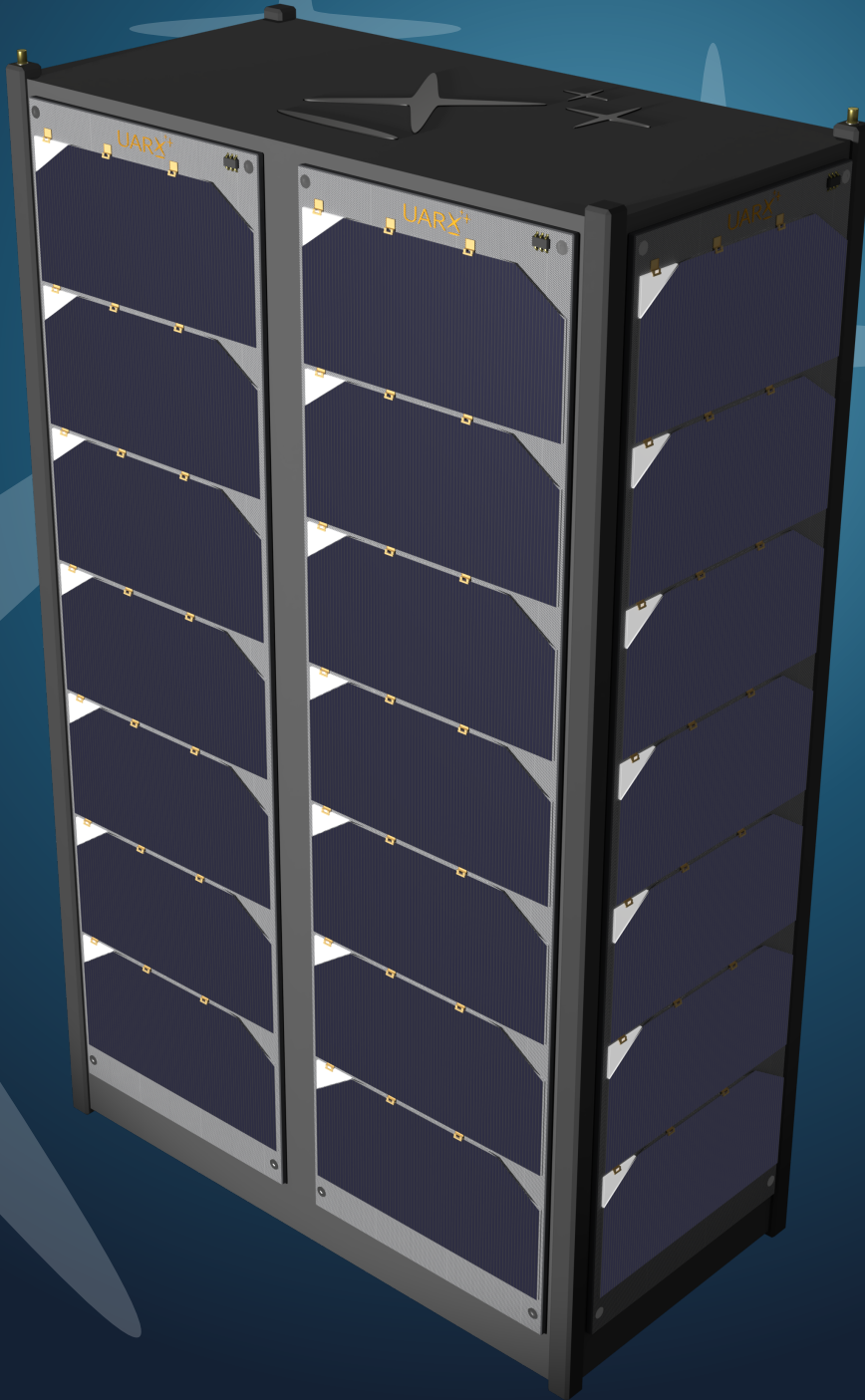
www.uarx.com

**UARX-Q-CRE-0043-C**

Rev. 0

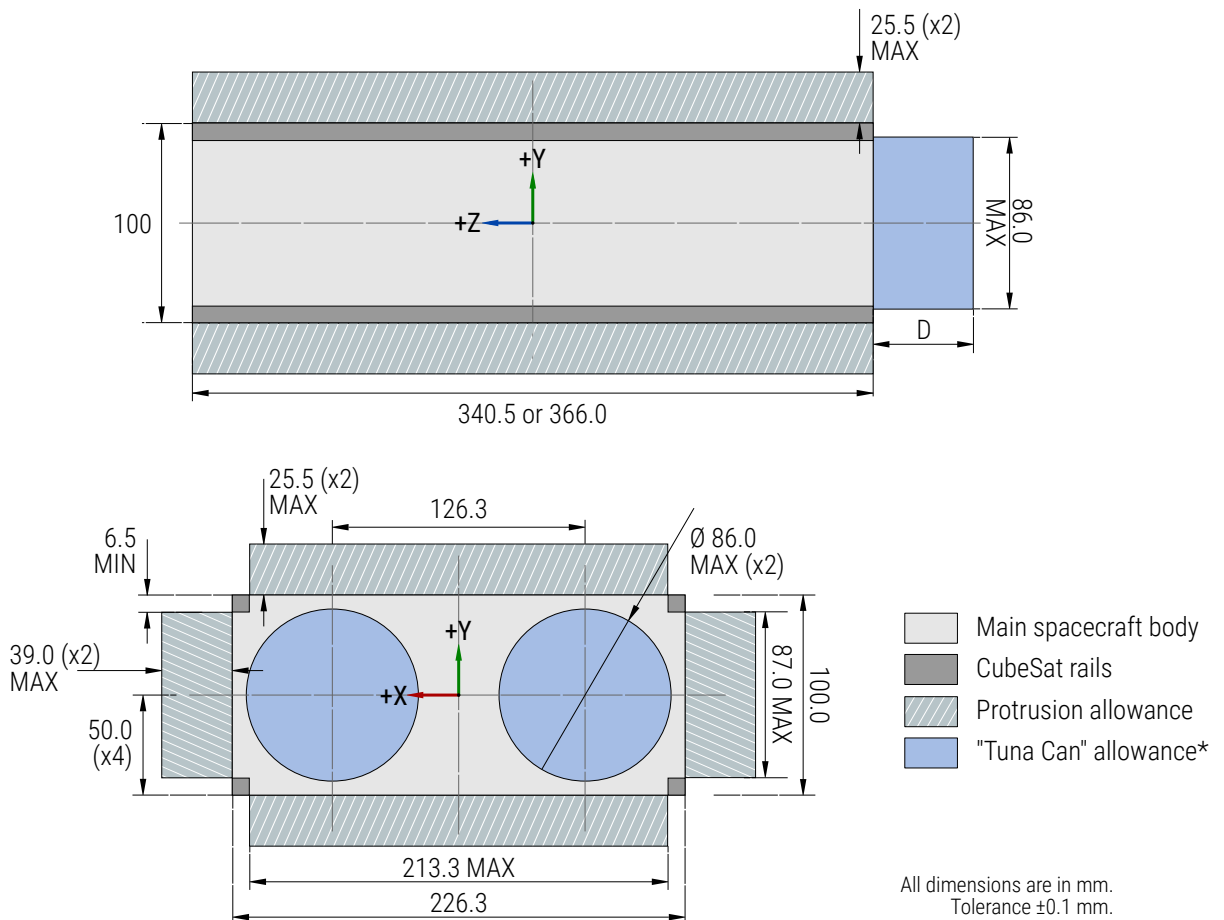
February 3, 2025

# UARX Space's Launch & Transportation Services



Allocation Quick Specs - 6U CubeSat

**Your ride in Space.**



RAMI deployers accept two lengths of CubeSats, the standard with 340.5mm, and the XL with 366mm. Customers can take advantage of the extra-room RAMI provides, including 25.5mm of protrusions allowance in the dynamic envelope, and up to 39mm in the Y-axis.

Technical Specification	6U	6U-XL
Maximum payload mass [kg]	15.0	15.0
Number of Tuna Can available	2	2
Surface roughness [ $\mu\text{m}$ ]	<1.0	<1.0
Maximum center of gravity deviation <sup>1</sup> in X [mm]	±20.0	±20.0
Maximum center of gravity deviation <sup>1</sup> in Y [mm]	±20.0	±20.0
Maximum center of gravity deviation <sup>1</sup> in Z [mm]	±70.0	±70.0
Maximum Tuna Can length (reference D) [mm]	75.5	50.0

<sup>1</sup>Deviation is measured from the geometric center of the 6U spacecraft